



# postpro SF50 PP

## SPECIFICATION SHEET



### AUTOMATED CHEMICAL VAPOR SMOOTHING TECHNOLOGY DELIVERING END-USE PARTS FOR LOW VOLUME PRODUCTION.

AMT's PostPro SF50 PP is a patented chemical vapor smoothing solution for post-processing 3D-printed polypropylene parts. The PostPro SF50 PP is a step up in post processing technology and includes advanced features to provide a state of the art post processing experience using green and sustainable consumables.

The PostPro SF50 PP is engineered to the same high standard as the industrial SF100 range, but with a more compact processing chamber for smaller production runs and prototyping.

#### PROPRIETARY PATENTED TECHNOLOGY

Based on 5 years of fundamental research at the University of Sheffield and proven in industry over 5 years. Protected under the following patents: EP3565712, GB2582225 & GB2597240B.

#### ENHANCING PART PROPERTIES

The only technology that smooths and seals the surface and internal cavities of 3D printed polymer parts, while also improving mechanical properties.

#### COMPATIBILITY

Works with powder and extrusion-based additive manufacturing technologies. The PostPro SF50 PP is designed to smooth a range of Polypropylene materials from SLS, MJF, HSS and FFF applications.

#### INDUSTRY 4.0 AUTOMATION

Industry 4.0 ready with the capability to seamlessly connect with external MES and ERP systems.

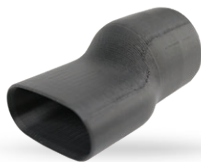
#### COMPLIES WITH ALL INDUSTRIAL HEALTH AND SAFETY STANDARDS

Proprietary industry accepted solvent consumables validated in highly regulated applications from medical and dental to consumer and food applications. PostPro SF50 Pure works with a range of solvents tailored to your specific requirements.

#### SAFE AND SUSTAINABLE

Fully closed-loop system to ensure operator and end user safety. Zero system waste and full consumable recycling. Utilizing AMT's Green PostPro PP consumable for safe and sustainable operation.

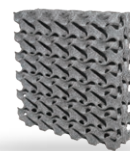
#### PART EXAMPLES:



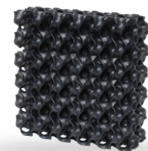
BEFORE



AFTER



BEFORE



AFTER

	EU	US
<b>External Dimensions (WDH)</b>	830 x 1,400 x 1830 mm	33 x 55.5 x 72 in
<b>Weight</b>	800 Kg	1,765 lbs
<b>Recommended Operating Area</b>	2,350 x 3,200 mm	92.5 x 126 in
<b>Capacity</b>		
<b>Process Chamber Dimensions (WDH)</b>	400 x 300 x 400 mm	15.7 11.8 x 15.7 in
<b>Process Chamber Volume</b>	48 Litres	48 Litres
<b>Consumable Canister Volume</b>	10 Litres	10 Litres
<b>POWER</b>		
<b>Three Phase</b>	3 x 400V, 16A, 50/60Hz, (L1+L2+L3+N+PE)	3 x 480V, 30A, 50/60Hz, (L1+L2+L3+PE)

Additional electrical supplies can be accommodated via an optional internal transformer. Please contact AMT for further details.

#### SAFETY AND CERTIFICATION

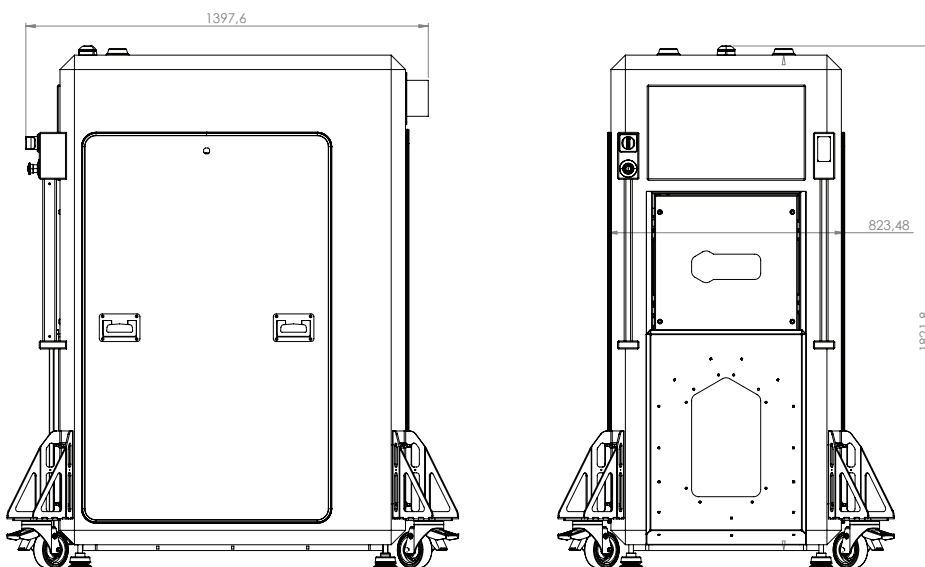
PostPro SF50 PP is fully CE certified and has advanced safety features.

\*Specifications subject to change

**FEATURES:**

- **Safety Circuit:** Front mounted E-Stop button
- **User Interface (HMI):** 1080p Full HD. 21.5" Touch Screen
- **Consumable Management:** RFID canister recognition and fool proof connections
- **Multiple Consumables:** Can be used with all of AMT's finishing agents
- **Small Footprint:** Reduced footprint and working area requirements
- **Ergonomic Chamber Loading:** Front loading process chamber for operator ease and comfort
- **User Access:** RFID controlled user access
- **Easy Transport:** Optional removable stabilizers for ease of movement and positioning during installation
- **Flexible Power Supply:** Optional internal transformer to suit the majority of local power supplies\*

**DIMENSIONS**



\*Please consult with AMT to confirm suitability

