

FS422M

Continuous Additive Manufacturing System

► www.farsoon.com



DESIGNED FOR PRODUCTION

The FS422M is the second generation metal laser powder bed fusion system designed under the CAMS concept offering continuous production capability. With its expanded build envelope size 425 x 425 x 550 mm, the FS422M is capable of producing large metal parts for aerospace, automotive and manufacturing industries. Equipped with high-precision digital scanning system and optional quad 500-watt lasers configuration, the FS422M offers optimal volume build rate up to 150cm³/h for significantly improved throughput for industrial scale series production.

HIGH QUALITY, REPEATABLE PARTS

Equipped with advanced multi-laser scanning strategy and calibration algorithms, the FS422M offers optimal build efficiency, and uniformed part performance in overlapping areas. Continuous close-loop top-feed powder delivery system, optimized in-chamber gas flow, and inert gas protection allow for uniform melting process of metal powder. Powerful build process control and real-time re-coating monitoring ensure the optimal industrial build quality.

COST PERFORMANCE

The integrated permanent filter system allows for the processing of active materials with lifespan more than 10 years. In addition, like all Farsoon machines the FS422M is a truly open platform which offers the user a high degree of control to tailor processing parameters for industrial application requirements and cost-competitive metal additive manufacturing.



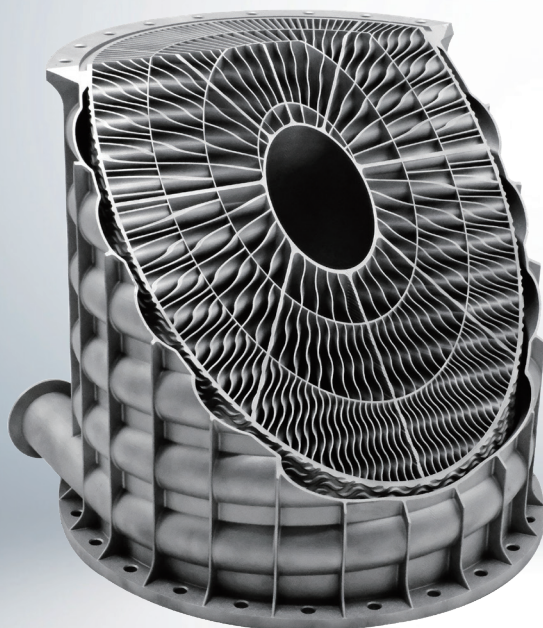
FARSOON FS422M

TECHNICAL DATA	FS422M	FS422M-4	FS422M-H-4
External Dimensions (L×W×H)	5000×2800×2400 mm (196.9×110.2×94.5 in)	5000×2800×2400 mm (196.9×110.2×94.5 in)	5000×2900×2700 mm (196.9×114.2×106.3 in)
Build Cylinder Size¹ (L×W×H)	425×425×420 mm (16.7×16.7×16.5 in) (Height incl. build plate)	425×425×420 mm (16.7×16.7×16.5 in) (Height incl. build plate)	425×425×550 mm (16.7×16.7×21.7 in) (Height incl. build plate)
Net Weight	Approx. 3400 KG (7495.7 lb)	Approx. 3400 KG (7495.7 lb)	Approx. 3700 KG (8157.1 lb)
Layer Thickness	0.02~0.1 mm (0.0008-0.0039 in.)		
Scanning Speed	Max. 10 m/s (32.8 ft/s)		
Laser Type	Single Laser, 1×500W	Quad Lasers, 4×500W	Quad Lasers, 4×500W
Scanner	F theta lenses		
Inert Gas Protection	Argon/Nitrogen		
Average Inert Gas Consumption in Process	3-5 L / min		
Operating System	64 bit Windows 10		
Comprehensive Software	BuildStar, MakeStar®		
Key Software Features	Open machine key parameters, real-time build parameter modification, three-dimensional visualization, diagnostic functions		
Data File Format	STL		
Power Supply	EUR/China: 400V±10%, 3~N/PE, 50Hz, 32A US: transformer sold with machine		
Operating Ambient Temperature	22-28°C (71.6-82.4°F)		
Materials²	316L, HX, HAYNES 230*, IN718*, IN625*, AlSi10Mg, AlMgSc*, Ti6Al4V, TA15*, CrZrCu, CuSn10*, Pure Copper, more materials to come		

¹ The functional build volume depends on the parts/materials.

² The materials marked with * are in the build process development.

Many factors may affect the performance characteristics of products. We recommend that you make tests to determine the suitability of a product for your particular purpose prior to use. Farsoon makes no warranties of any type, express or implied, including but not limited to, the warranties of merchantability or fitness for a particular use. This also applies regarding the consideration of possible intellectual property rights as well as laws and regulations. Farsoon reserves the right to change the technical data without notice. Farsoon®, Buildstar®, Makestar® are registered trademarks of Farsoon Technologies. Last Change: 2023-09



PART : IN-LINE TUBE & SHELL HEAT EXCHANGER

SIZE: 412×412×380 MM (16.2×16.2×15.0 IN)

MATERIAL: AlSi10Mg

SYSTEM: FS422M

www.farsoon.com

AMEA Farsoon Technologies Co., Ltd. | +86.731.8397.6198 | globalinfo@farsoon.com | No. 181 Linyu Road, Changsha National High-Tech Industrial Zone, Hunan, China

AMERICAS Farsoon Americas CORP. | +1 512-551-9901 | contact@farsoonam.com | 3161 Eagles Nest Street, Suite 350, Round Rock, TX 78665

EUROPE Farsoon Europe GmbH | +49 711 13796 0 | wehelpyou@farsoon-eu.com | Liebknechtstrasse 33, 70565 Stuttgart, Germany