

PostPro SF50

PATENTED, AUTOMATED CHEMICAL VAPOR SMOOTHING SYSTEM DELIVERING END-USE PARTS FOR PRODUCTION.

AMT's PostPro SF50 is a patented chemical vapor smoothing solution for post-processing thermoplastic polymer 3D printed parts. The PostPro SF50 includes advanced features to provide a state of the art production experience.

Works with powder and extrusion-based additive manufacturing technologies. Tested with over polymers including nylons and TPU/TPE flexible materials. Ideal for SLS, MJF, HSS.

FEATURES INCLUDE:

- **Safety Circuit:** Front mounted E-Stop button.
- **User Interface (HMI):** 1080p Full HD, 21.5" touch screen.
- **Consumable Management:** RFID canister recognition and fool proof connections.
- **Multiple Consumables:** Can be used with all of AMT's processing consumables.
- **Small Footprint:** Reduced footprint and working area requirements.
- **Chamber Loading:** Front loading at an ergonomic height.
- **User Access:** RFID controlled user access.
- **Easy Transport:** Optional removable stabilizers for ease of movement and positioning during installation.

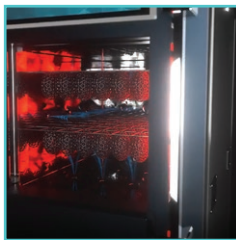


STAGES OF VAPOR SMOOTHING

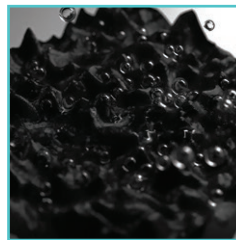
Part loading



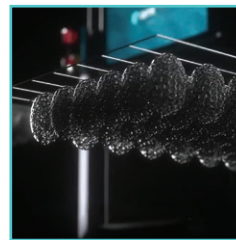
Processing



Curing & Drying



Part removal



TECHNICAL SPECIFICATION

Description	EU	US
External Dimensions (WDH)	830 x 1400 x 1830 mm	33 x 55.5 x 72 in
Weight	800 Kg	1,765 lbs
Recommended Operating Area	2,350 x 3,200 mm	92.5 x 126 in
Capacity		
Process Chamber Dimensions (WDH)	400 x 300 x 400 mm	15.7 x 11.8 x 15.7 in
Process Chamber Volume	48 Litres	
Consumable Canister Volume	10 Litres	
Power		
Three Phase	3 x 400V, 16A, 50/60Hz (L1+L2+L3+N+PE)	3 x 480V, 16A, 50/60Hz (L1+L2+L3+PE)

PostPro SF100

PATENTED, AUTOMATED CHEMICAL VAPOR SMOOTHING SYSTEM DELIVERING END-USE PARTS FOR PRODUCTION.

The PostPro SF100 is a step up in post processing technology and includes advanced features to provide a state-of-the-art post-processing experience. PostPro SF100 has been designed and built for production environments and high-volume throughput to enable industrial scale additive manufacturing.

Works with powder and extrusion-based additive manufacturing technologies. Tested with over polymers including nylons and TPU/TPE flexible materials. Ideal for SLS, MJF, HSS.

FEATURES INCLUDE:

- **Safety Circuit:** Front mounted E-Stop button.
- **User Interface (HMI):** 1080p Full HD. 21.5" touch screen.
- **Consumable Management:** RFID canister recognition and fool proof connections.
- **Multiple Consumables:** Can be used with all of AMT's processing consumables.
- **Small Footprint:** Reduced footprint and working area requirements.
- **Chamber Loading:** Front loading at an ergonomic height.
- **User Access:** RFID controlled user access.
- **Easy Transport:** Optional removable stabilizers for ease of movement and positioning during installation.

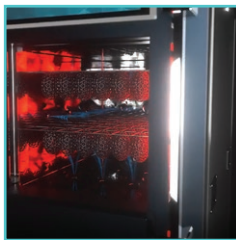


STAGES OF VAPOR SMOOTHING

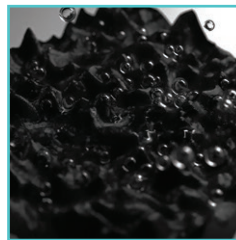
Part loading



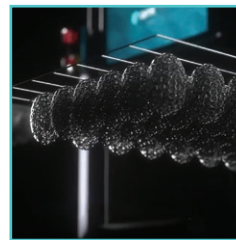
Processing



Curing & Drying



Part removal



TECHNICAL SPECIFICATION

Description	EU	US
External Dimensions (WDH)	830 x 1400 x 1830 mm	33 x 55.5 x 72 in
Weight	850 Kg	1,875 lbs
Recommended Operating Area	2,350 x 3,200 mm	92.5 x 126 in
Capacity		
Process Chamber Dimensions (WDH)	400 x 600 x 400 mm	15.7 x 23.6 x 15.7 in
Process Chamber Volume	96 Litres	
Consumable Canister Volume	10 Litres	
Power		
Three Phase	3 x 400V, 16A, 50/60Hz (L1+L2+L3+N+PE)	3 x 480V, 16A, 50/60Hz (L1+L2+L3+PE)